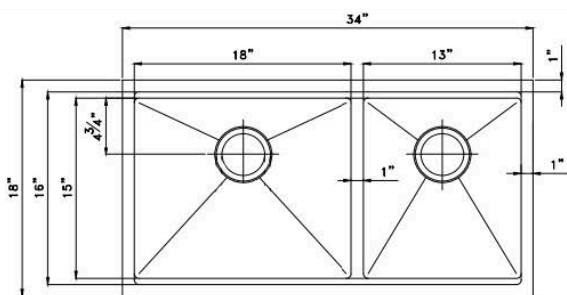


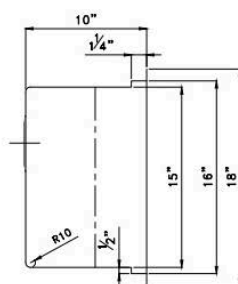
Titanium Series Plus - Model: 201834

Radius Corner

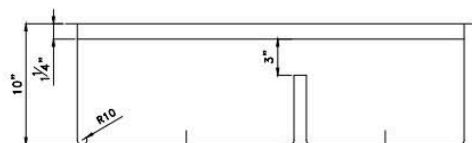
Rear positioned drain holes to maximize usable bowl and cabinet storage space below



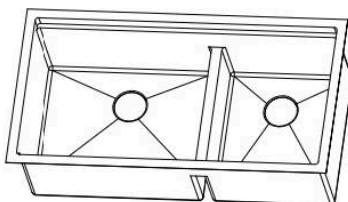
Top view



Right side view



Side section view



Specifications:

- Handcrafted
- 316 Stainless Steel 16 Gauge
- 18/10 Chrome Nickel Content
- Bowl Corner Radius of 15 mm
- Brushed Finish
- Clips & Template
- Stainless Steel Strainer
- Top To Lip 1 1/4" Lower
- Lip 1/2"
- 1" Wide Central Lowered 3"
- 10" Deep

Outside: 34" x 18" x 10"

Inside: 32" x 16" x 10"

Bowl Size: 18" x 16" x 10"

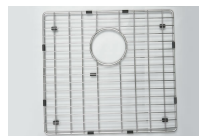
13" x 16" x 10"

Minimum cabinet size 36"

Certification/Warranty

- ASME A 112.19.3
- CSA B45.4
- Limited Lifetime Warranty

Included Accessories



Model: G201834B
Model: G201834S Grid



Model: 202010
Strainer



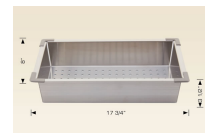
Model: 202036
Cutting Board



Model: 202038
Plate Holder



Model: 202039
Roll Up Dish Drying Rack



Model: 202037
Basket

Bosco Canada Inc. is known around the world for producing high quality kitchen sinks that incorporate modern design and functional superiority in every piece they manufacture.